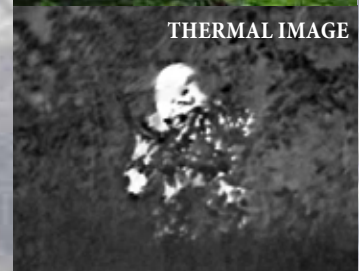


**SPECIAL
PRODUCTION**

KNOW



REGULAR IMAGE



THERMAL IMAGE



REGULAR IMAGE



THERMAL IMAGE



OPTIX



MINION is a portable uncooled thermal imaging camera suitable for integration into security and observation systems, enabling twenty-four hour surveillance in total darkness and under severe weather conditions.



REGULAR IMAGE

The innovative optical system, the sensitive detector and the digital video processing provide superb-detailed image at any time of the night or the day in a completely passive mode.



THERMAL IMAGE

The reliable mechanical design makes **MINION** suitable for external installation

without an additional sealing of the housing.

Using various lenses it is possible to detect a human target at range from 460 to 1800 m (depending on the objective) and to recognize a human target at range from 150 to 600 m (depending on the objective).

Along with its accessories **MINION** includes a graphical user interface software for remote control and setup of the main functions.



MINION is designed for versatile application in the field of security systems, fire-precaution equipment, video surveillance of border areas, strategic zones and others.



MINION is an IP camera and can be used for an upgrade of any existed CCTV video surveillance TCP/IP network and controlled over a PC. Using this configuration, you can remotely control all activity over the Web.

In conclusion **MINION** combines the ability to conduct surveillance over long distances and the advantages of the uncooled thermal imaging cameras, which are:

- Lack of a cryogenic cooler having a high consumption and expensive maintenance;
- Significantly lower price;
- Continuous operation.

MINION TECHNICAL PARAMETERS

SENSOR (FPA)

Material **Microbolometer**
 Spectral range **8 ÷ 14 μm**
 Resolution **384 x 288 pixel array**
 Frame rate **25 Hz (PAL) / 30 Hz (NTSC)**
 Pitch size **25 μm**
 NUC **Automatic / Manual**
 Polarity **White hot / Black hot**
 Contrast / Brightness **Automatic / Advanced Image Processing**
 NETD **~ 50 mK**

OBJECTIVES

Focal length **25 mm, 35 mm, 50 mm, 60 mm, 100 mm**

FUNCTIONAL CHARACTERISTICS

FOV **21.7°(H) X 16.4°(V), 15.6°(H) X 11.8°(V), 11°(H) X 8.2°(V), 9.2°(H) X 6.9°(V), 5.5°(H) X 4.1°(V)**

Functions **Video Polarity, NUC, Zoom, Freeze, ROI (region of interest)**

Analog video output **CCIR (PAL) or RS-170 (NTSC)**

Digital video output (option) **USB 2.0**

Remote control **TCP/IP, RS 232, RS 422, RS485 or USB 2.0 (option)**

Consumption **≤ 5 W**

Voltage **12 ÷ 36 V DC**

Work temperature range **-40°C to +60°C**

Encapsulation **IP66**

Dimensions (H x W x L) **132 mm x 325 mm x 126 mm**

Weight (w/o lenses) **600 g**

THERMAL IMAGING PERFORMANCE

Human detection range **> 461 m (f'=25 mm)**

Human recognition range **> 153 m (f'=25 mm)**

Human detection range **> 645 m (f'=35 mm)**

Human recognition range **> 215 m (f'=35 mm)**

Human detection range **> 922 m (f'=50 mm)**

Human recognition range **> 307 m (f'=50 mm)**

Human detection range **> 1106 m (f'=60 mm)**

Human recognition range **> 370 m (f'=60 mm)**

Human detection range **> 1844 m (f'=100 mm)**

Human recognition range **> 615 m (f'=100 mm)**

Operational distances are given at levels of 50% success probability and 2°C temperature difference between target and background



Bulgaria Tel.: +359 357 60 616
4500 Panagyurishte Fax: +359 357 63 097
65, Zahari Stoyanov Str. E-mail: sales@optixco.com
Tel.: +359 357 64 125 http://www.optixco.com/

KINION



OPTIX

